



The Elton Times - Edition 151

20 December 2024

Forthcoming

FRIDAY 20 DECEMBER - SCHOOL CLOSSES FOR CHRISTMAS HOLIDAY AT 13:00PM

MONDAY 6 JANUARY - SCHOOL OPENS AT 08:40AM

Monday 6 January - Year 9 and 11 Grade Cards Sent Home

Tuesday 7 January - Flu Vaccination Catch-Up Session

Thursday 9 January - Year 11 Parents' Evening (In School)

Monday 20 January - Year 7, 8, 10 Grade Cards Sent Home

Thursday 23 January - Year 9 Pathways Evening

Headteacher's Welcome

We have put a slight delay in the scheduled sending of this newsletter so that we can include full write ups of the various events and activities that have been taking place in the run up to Christmas. In this week alone, we have had the Christmas Concert (Wednesday evening), while the ice skating reward trips were on Tuesday, the Trafford Centre on Wednesday and the theatre trip to see 'Wicked' is due on Thursday. All of these activities, along with the Rewards Assemblies (due Thursday/Friday) mean that usual routines have been more difficult to follow, though I must emphasise that students have been conducting themselves really well.

When we return to school in January we will use the start of the new term as an opportunity to reinforce the Elton Way to our students, so that the good work of recent months can be strengthened. The main points to flag up are listed below.

Attendance - We have the best attendance of all high schools in Bury and have been recognised as one of the top 30% of schools nationally for our student attendance. However there is no room for complacency as we know that student absence directly impacts on their results. We ask that parents/carers continue to ensure that contact is made with school when your child is absent (0161 763 1434 or attendance@eltonhigh.bury.sch.uk). Please also note that we will continue with home visits once a child has been absent for 3 or more days as part of our standard safeguarding and welfare procedure.

ARK Awards - Will continue every Thursday afternoon, with the very best efforts from students being rewarded on a weekly basis after P5. Postcards and prizes will be distributed and all winners are logged onto the achievement point system.

Punctuality - This has improved from the same time last year, with more students arriving to school and lessons on time. However, there is still room for further improvement and the ongoing system of two lates in a school day will continue to be followed, while 100% punctuality will be recognised in a series of regular prize draws!

SatchelOne - Is now embedded and used across the school (for homework, daily behaviour updates, etc) and is hopefully giving everyone a much clearer picture of what takes place in school. If you still have any login issues then please let us know directly and they will be resolved.

Uniform/Personal Presentation - Regular checks will take place in the new term in form time and in assemblies. Jewellery should not be worn in school (unless single stud earrings) and will be confiscated as necessary. False nails and eyelashes are also not allowed and we will take social time from those students who fail to address this as needed.

Phones - Reminder that phones should be turned off in the school building. Phone use leads to step1/2/3 confiscation and we appreciate the support that we receive from parents/carers about this.

Further to the above, our Year 11 students are now moving into an extremely important period whereby intervention sessions are now timetabled in all subject areas and are taking place at lunchtime and after school. Each Year 11 student should have a personalised intervention timetable which shows what they have on a daily basis. The first session starts on the first day back (Monday 6th January) and takes place in the English department after school. The Parents' Evening for Year 11 is due on the first Thursday (9th January from 4pm) and is taking place **in school** rather than virtually. We anticipate a very high attendance for this important event.

The weight of information and articles in this newsletter only gives an indication of the amount of work that has been taking place across school on so many levels. I hope that the details provided above give the necessary clarity about the students' return in January and we look forward to building on the strong start that we have made this term. In the meantime, I hope that our students and families enjoy the forthcoming festive season and have a good break from work. As always, if you have any queries or questions about school then please don't hesitate to contact me through the email address below, and have a lovely holiday.

Jonathan Wilton, Headteacher

Email: wiltonj@eltonhigh.bury.sch.uk

Year 11 Update

Year 11 students have shown great maturity and sense in reflecting on the outcomes from the first set of mock exams. Plans for the second mock exams are in place for next term, so we hope students will enjoy a good rest during the Christmas period and enjoy making New year's Resolutions for a successful 2025!

Our school-wide intervention programme begins on the first day of the Spring term. Students have all completed personalised timetables which will be returned to them by tutors on the first day back, and sessions will begin with English for all students after school on Monday 6th January.

We are looking forward to seeing year 11 families in school for our parents' evening on Thursday 9th January.

The overview of interventions taking place next term is below for your information.

Ms Warden, Deputy Headteacher

Email: wardens@eltonhigh.bury.sch.uk

	Monday	Tuesday	Wednesday	Thursday	Friday
Lunchtime	Art, Photo, Textiles Food and Nutrition (NEA 2 - 11C cooking over lunch)	Art, Photo, Textiles Music Food and Nutrition (NEA 2)	Art, Photo, Textiles MLW - History LB - History REM - Biology SYR - Biology HD - Chemistry AST - Chemistry RST - Physics	Maths Art, Photo, Textiles CL - Biology HK - Biology CRB - Chemistry NA - Chemistry PG - Physics MAB - CompSci	Maths Art, Photo, Textiles
After School	English - ALL NG - Vocational ICT (NEA)	Maths French Food and Nutrition (NEA 2) WA - Business Studies Design Technology (NEA) - JBL Art, Photo, Textiles	Maths Geography HR - History WA - Business Studies MAB - Comp Sci Sports Studies GCSE PE	Maths Music MLC - History NFP - RE Design Technology (NEA) - RMU	KC - Physics

Year 9 Pathways

Year 9 students and their families are invited into school on **Thursday 23rd January** to find out more about Pathways choices.

There will be an information session in the main hall followed by opportunities to speak to Heads of Department and year 10 students about the qualifications on offer in years 10 and 11.

The sessions for families with students in forms E, L, T and O will be at 4.30pm followed by a session for those in forms N, H, S and B at 5.30pm.

Ms Warden, Deputy Headteacher

Email: wardens@eltonhigh.bury.sch.uk

Year 7, 8 and 9 Ice Skating Trip

On 17th December 400 students from Year 7, 8 and 9 took to the ice to show off their skills. The students who attended conducted themselves in an exemplary manner and it was a well deserved treat at the end of a busy term.

Miss Helme, Assistant Headteacher

Email: helmev@eltonhigh.bury.sch.uk





Year 10 and 11 Trafford Centre Trip

230 students from Year 10 and 11 attended the Trafford Centre trip on Wednesday this week. The students who attended conducted themselves in an exemplary manner, receiving compliments from the Trafford Centre staffing. Another well deserved treat at the end of a busy term!

WICKED! Trip

200 students, from all year groups across the school, attended the WICKED! musical at The Palace Theatre in Manchester yesterday. The show was a superb experience and thoroughly enjoyed by all. All students represented the school in such a positive manner - another fantastic trip!

Winter Concert

There were around 65 students involved from year 7 to year 11 including Will Schofield performing one of his grade 8 drum pieces. Staff choir also performed along with choir, drumming group, keyboard club, woodwind group, Jazz Band and guitar club. There were also performances by our year 10 GCSE group and year 9/10 rock band. Over 200 people attended and it was a fantastic way of getting into the Christmas mood!

Mrs Stopford, Head of Music

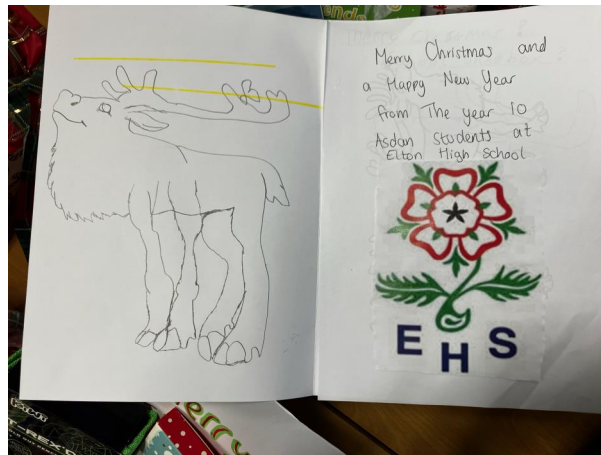
Email: stopfordk@eltonhigh.bury.sch.uk





Year 10 ASDAN

The Year 10 Asdan students have been working incredibly hard this half term to raise money and awareness for a local charity, The Bury Homeless Project. As part of their community module, they have raised money for three Christmas shoeboxes which will be delivered to children who are in need across Bury. This Tuesday the charity came to collect them and were incredibly grateful for the donations and the student's hard work - well done!







Catering Facial Recognition - Go-Live!

The majority of students are now registered for the new system which will go live at the start of January. If you haven't completed the parental consent, you can still consent via the link: [Facial Recognition Link](#).

There will be plenty of opportunity for any students that may have been absent on the registration day or where we have only recently receive consent to register in the new year. Anyone can opt-in to facial recognition at any time going forward.

Mrs Filkins, School Business Manager

Email: filkinsj@eltonhigh.bury.sch.uk

Online Safety

Buying a new game for Christmas? if so, please read [here](#) to see what the PEGI ratings are and how they can help make informed choices.



For Parents - Loot Boxes

For many children and young people playing games is predominantly about socialising with their friends. Because of this there can be significant peer pressure to look and be better than everyone else, to get further in the game than other and more. In-game purchases such as loot boxes capitalise on this peer pressure, essentially enticing users to get ahead more quickly by spending money.

Loot boxes have been a concern for a long time. A few years ago in the UK it was thought that loot boxes would come under the updated Gambling Act but this never happened due to a lack of research, however it is though my many (including myself) that loot boxes can be a gateway or lead-in to gambling.

Concerningly, a BBC investigation has found that, out of the top 45 biggest games on the Google Play store, most are not disclosing that the games contain loot boxes properly. Many parents rely on the information that is available on the various game/app stores as well as ads to decide what is/is not appropriate for their children and this lack of important information is inexcusable.

The BBC article can be found [HERE](#).

For Parents - My Family's Digital Toolkit

The Family Digital Toolkit is where parents can get personalised online safety advice based on a number of factors such as age, popular apps and platforms their children use, tackling online issues and more.

The Family Digital Toolkit can be found [HERE](#).

Art to Heart - Thank You!

Since early September, our Year 7 students have been signing up for our Art to Heart scheme with great enthusiasm and we have had a stream of outstanding volunteers. Students have practiced their conversation skills and helped care home residents make some beautiful art work. We are still accepting new volunteers and any Year 7 student who has not already signed up and would like to take part, please ask your Art teacher or Miss Perry for a letter. This is a great opportunity for pupils to develop their communication, empathy and citizenship skills by instructing, guiding and talking to those they help. Thank you so much to all the staff and residents at Killelea house for welcoming us this year.

A message from Staff at Killelea for our Art to Heart volunteers this year. *"You and your students are always bright, cheerful and well mannered. Showing kindest and respect to the residents in Killelea in every activity class. Bringing so much joy to the residents and playing a huge part in keeping them engaged and happy throughout the crafting class. The Students are an absolute credit to the School. All the best for Christmas. We look forward to seeing you all in the New Year."*

Miss Perry, Art to Heart

Email: perryh@eltonhigh.bury.sch.uk







Porch Box Appeal 2024

THANK YOU! THANK YOU! THANK YOU!

I am thrilled to report that **26** boxes full of donations have been successfully delivered to the charity. Also a whopping **£530** raised on our GoFund page. What an incredible achievement by Elton's students and families.

A special shout out to **Will** and **Tabby** who have given up their own time to sort and organise your donations.

Warmest Thanks Mrs Wilson

NB: Special thanks to Mrs Wilson for her time and organisation of this project. It has taken up so much of her time and it is credit to her that she manages it in addition to all her Maths teaching!



Year 8 Rewards Breakfast

Year 8 form tutors nominated two students from each form group to attend a rewards breakfast on Friday 13th December. These nominees have consistently demonstrated the Elton Way this term and make us all very proud on a daily basis. Well done to:

- Freya Allen- Abbie Ward- Oliver Saville- Isla Fitzpatrick- Isla Lodge- James Forrest- Harry Whitworth- Hannah Moore- Holly Thomas- Riley Rowe- Erin Carrol- Isabel Percival- Daniel Friend- Adam Fieldstead

This is a thoroughly deserved reward for these students and I know there were many other potential nominations too!

Wishing all of Year 8 a very Merry Christmas and a Happy New Year!

Miss Waltham, Year 8 Learning Co-ordinator

Email: walthamm@eltonhigh.bury.sch.uk



Spotlight on Careers - Year 10 Work Experience

The dates for the Year 10 one week Work Experience have been confirmed as **Monday 16th to Friday 20th June 2025**. Students have been asked to research and try and find their own Work Experience placement which usually happens with the help of family and friends.

Each placement must be verified and checked by Mploy Solutions for suitability and to ensure that all necessary employee liability insurance is in place. Mploy will go and out and perform a health and safety check on all placements so early organisation of students is vital to give Mploy the time to perform these essential checks. All students will be emailed a unique link to the Mploy Solutions database and when they have secured a placement they must upload all necessary employer details onto this system so that appointments can be made for the health and safety visits. If a student cannot source their own placement, Mploy Solutions have their own bank of employers that can offer placements, however, this can only accommodate approximately 20% of the year group so for Work Experience to be a success we are relying on the majority of students sourcing their own placement. The following link provides further explanation and insight into why Work Experience for students is such a worthwhile and valuable activity.

<https://www.stepahead.co.uk/blog/benefits-of-work-experience>

Mr Meighan, Head of Careers / Post 16

Email: meighank@eltonhigh.bury.sch.uk

Art Department

Well done to all of the GCSE Art, Photography and Textiles students who have regularly been attending intervention sessions!

You can work in the Art Department during any lunch time, or Tuesday after school.

Remember, students who attend intervention regularly, **always** improve their work by at least one full GCSE grade. You can also enjoy free biscuits and hot chocolate (sometimes!)

Mr Thomas, Head of Art

Email: thomasg@eltonhigh.bury.sch.uk





Both art club and painting club have created some lovely work over the past half term, making work inspired by Keith Haring and paper cut art work. Here are some of their outcomes. Painting club runs on a Monday lunchtime and art club runs after school on a Thursday.

Mr Goodwin, Assistant Head of Art

Email: goodwind@eltonhigh.bury.sch.uk







Geography Department

Last week there were two Geography trips to Salford Quays for year 11 students to complete Human Geography fieldwork. Students completed a range of different fieldwork techniques in a number of different locations and were great ambassadors for the school.



Also, well done to all of KS3 for trying so hard on your recent assessments. See below a list of outstanding students who were the top scorers in their class/ in their year group!

Top scorers in the classes:

Year 7 - Alicia Caine, Dylan Smethurst, Henry Moore, Georgia Greensmith, James Parmenter, Euan Hughes, Harvey Rhodes, Amelia Rivers, Frazer Sharp, Harry Slaughter, Emma Nicotra and Elise Lam.

Year 8 - Ben Taylor, Luke Burgoyne-Frankland, Pippa Hobson, Joshua James Watson, Amelia Campbell, Emily Cancelliere, Hannah Law, Emmy Davies, Evan James, Freya Allen, Daniel Rylance and Pearl Anderson.

Year 9 - Evie McKee, Hebe Smith-Prince, Reuben Harris and Joseph Hindle, Ben Dawson, Macie Wilkinson Moran, Isabella Taylor, Jake Todd and Leo Fox.

Top scorers in each year group:

Year 7 - Alicia Caine and Dylan Smethurst.

Year 8 - Luke Burgoyne-Frankland, Ben Taylor and Pippa Hobson

Year 9 - Joseph Hindle

Mrs Moss, Geography Department

Email: mossm@eltonhigh.bury.sch.uk

ICT Department

Cyber Escape Room Challenge

A group of Year 9 pupils had the opportunity to take part in the Cyber Escape Room Challenge provided by Greater Manchester Police Cyber Crime Unit on Wednesday 11th of December 2024.

GMP Cyber Protect and Prevent Officers ran a session highlighting key cyber security messages, where the students could learn about the importance of long and strong passwords, 2SV, updates, backups, and phishing.

The pupil then had an hour to embed these messages and with their newfound knowledge and support of their peers to complete the cyber escape room challenge.

Congratulations to Heidi Fitzgerald, Ava Holman, Olive Withington, Ellie-Rose Legge, Zhara Hashmi and Ava Donnelly for managing to complete the challenge within 30 minutes.



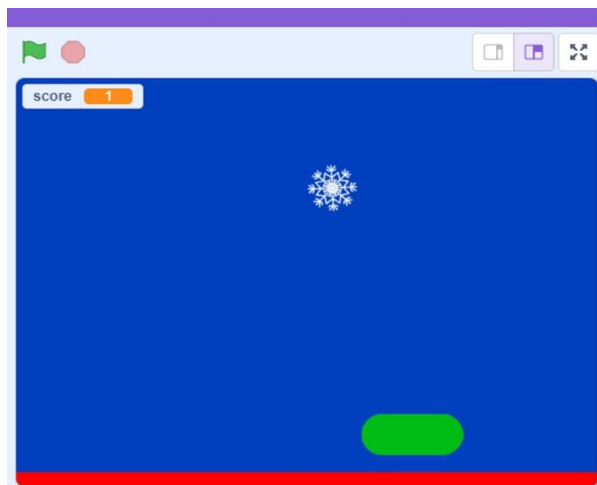


Computing Club Projects

Computing club projects completed by students.

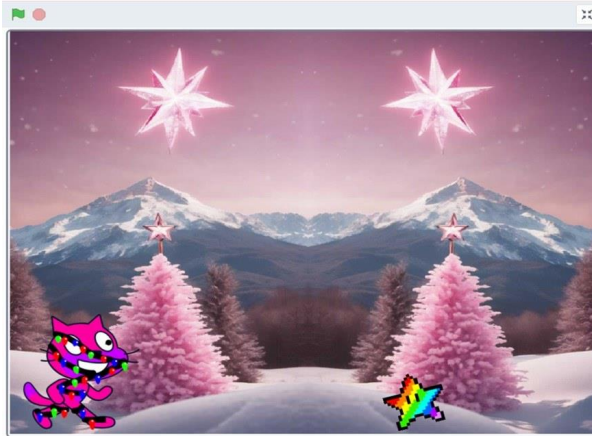
Snowflake

The player has to stop the snowflake from touching the red line as many times as they can. Every time they catch the snowflake, the score goes up by 1. When the snowflake touches the red line the game will stop and say game over. Amber-Rose Kelshaw



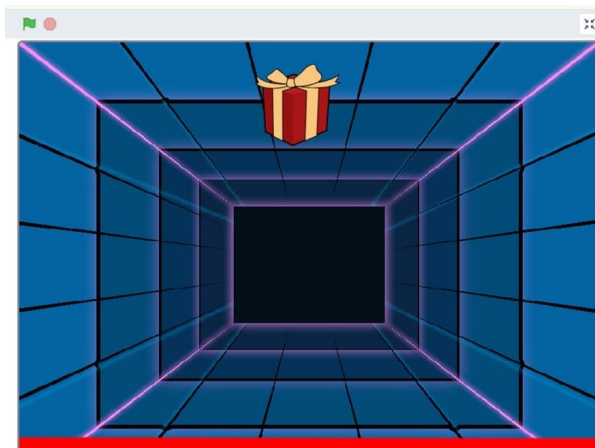
SuperStar Jump

The player has to jump over the Rainbow Star and get a high score. The game is endless until they die (when the star touches the player). Madison Hedley-Nuttall



Catch The Present

The player has to catch the present as many times as they can but if they do not it will touch the red line and you will lose the game. Thomas Guest



You have to not let the present touch the BLUE line or you will lose. Ethan Berry



The player has to catch the presents. If they catch the red presents, they lose a life but if they catch the green presents, they gain 1 point. When the player loses all lives the game will stop. Ava Whittaker



FUN FACT

**THE FIRST COMPUTER
BUG WAS A MOTH**

4



Thomas Edison was the first person who used the word "bug" to describe a technical issue in a letter dating back to 1878.

However, the first programming bug ever recorded was an actual insect!

It was on September 9, 1947, when a team of programmers at Harvard University reported unusual errors on their Mark II computer. Upon investigation, they found that a trapped moth disrupted the electronics of the computer.



Maths Department

Maths Challenge KS4

The sum of two number a and b is 7. The difference between them is 2 . Find the product ab.

Maths Challenge KS3

A bag has 50 coins. The total value is £1.81. The bag contains only 2p coins and 5p coins.

How many more 5p coins are there than 2p coins?

Deadline Friday 10th January - Prizes available!

Email armishawm@elton.high@bury.sch.uk with your solutions.

RE Department

Dutch Shuffleboard Tournament

Last week, I held a Dutch Shuffleboard Tournament every lunchtime, that students from all year groups were invited to participate in. I came across this game a few years ago on a family holiday, and it was something that we all enjoyed, regardless of age or ability!

I thought it would be good to have one at home, especially for family gatherings, but the reality is that it gets used once or twice a year. Having started a games club for year 7 students this year, I decided it would get far more use if I brought it into school.

Students from most year groups came to have a go, but not all were keen on having their photo taken..... Some students were more competitive than others, but everyone who played enjoyed it. The winner of year 7 was Alicia Caine, year 8 was Luca Greenlees, year 9 was Ellie Mills and year 11 was Isabella Hirst, some of whom are pictured below.

Thanks to all those who got involved and happy holidays!

Mrs Parkinson, Head of RE

Email: parkinsonn@eltonhigh.bury.sch.uk



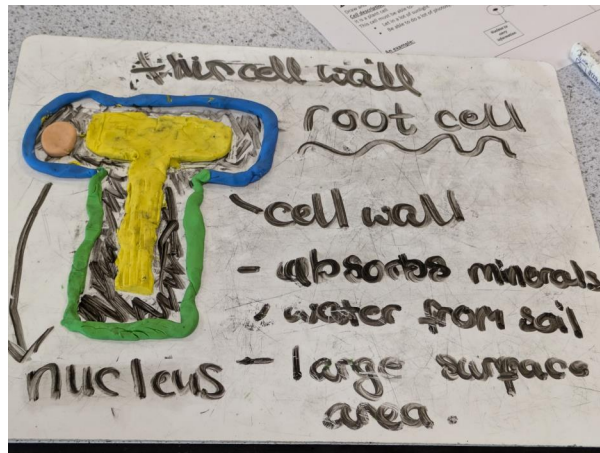


Science Department

Year 9 made models of specialised cells to help them identify and name the different organelles and adaptations to their functions. Some examples are shown below:-

Mrs Colyer, Deputy Head of Science

Email: colyerk@eltonhigh.bury.sch.uk



Educake Homework

Well done to the following students on the very high standards of their science educake homework. They have all answered at least 500 questions and got over 80% correct answers first time:

Bradley Tattersall Y10; Isobel Woodhams Y10; Isabella Hirst Y11; Anna Turmore Y10; Emmanuella Ilevbabor Y10; Adam Dennis Y10; Lily Norris Y10; Elliot Darlington Y11; Happiness Dianda Y10; Ava Cooper Y11; Cameron Sharp Y10; Paul Quaye Y10; Al-Ryan Ahmed Y10; Samir Khan Y10; James Rigby Y11; Teddy Smith Y10; Paige Smith Y10; Dunne

Carrol Y10; Freya Dowthwaite-Smith Y10; Lewis Allen Y10; Beatrice Ward Y11; Mia Campbell Y10 and Evan Chalmers Y11

And a massive well done to Henley Alexandre-Wright who has answered a mammoth 3854 questions!

Mr Stringer, Science Department

Email: stringerr@eltonhigh.bury.sch.uk

PE Department

Our year 10 & 11 netball squad played a friendly end of term match against our staff netball team, some of whom hadn't played netball since playing for their school teams! Thank you to all girls who played and for the three students who kindly umpired the game and kept score - students won 13-3!

Well played to all concerned and we look forward to a rematch next term!

Ms Jones, PE Department

Email: jonesp@eltonhigh.bury.sch.uk



Year 7 Cross Country Champions



Year 7 Netball

Our year 7 netball team played at Philips in The Bury Schools competition and had a lovely time. They enjoyed strong performances against Bury Church, Phillips and the Heys and had creditable scores against all three. Well done to all the girls.



Year 8 CVL Round 2

Elton 2-0 St Gabs. An impressive performance from the Year 9 team resulted in a very satisfying victory over a good St Gabs side. Goals scored by Matthew Clegg and Max Berry

Woodhey 2-1 Elton. Game 2 was a closer affair with two very evenly matched teams. Woodhey just pipped us at the death though Ethan Chalmers provided an excellent finish for the Elton goal.

Mr Meighan, PE Department

Email: meighank@eltonhigh.bury.sch.uk



Paris Trip - 13-16 March 2026

An exciting trip to Paris for Year 9 will soon be launched - 3 nights / 4 days staying in a Disney hotel with tickets into both Disney parks and a day in central Paris, with tickets for a Bateaux Mouches and to ascend the Eiffel Tower.

Full details to follow - Launching end of January 2025 to Year 9 students.

Miss LeBlanc, Trips Co-ordinator

Email: leblancj@eltonhigh.bury.sch.uk

Year 7 Rugby

WOODHEY 30 - 40 ELTON

A fantastic debut game for the newly formed Year 7 team. Their first fixture against Woodhey, led by Captain George Campbell, was a nail biting game until the final quarter. Some absolutely bone crushing tackles being delivered by Yousuf Afzal along with Tyler Cassidy's winged feet ensured that Elton came back from a 20 - 25 scoreline. Oscar Berry with his quick hands and Austin Nelson providing an accurate kicking game ensured that every ball was turned over at the breakdown resulting in points for the Green and blacks.

Absolutely stunning game of rugby for Elton, securing the Year 7 place in contact rugby within Bury.

Mr Vickers, Behaviour Mentor

Email: vickersg@eltonhigh.bury.sch.uk



Christmas Drop-Ins

Christmas Family Drop-ins

We know that Christmas is generally a time for family and fun - but we also know that sometimes this period can be difficult and stressful for a number of reasons.

This year we are opening our family hub and Children's Centre's across the borough to provide our families and young people a safe space to drop in if they want a chat, a friendly face or any support over this period.

Our Early Years, Early Help and Youth Service will be working together to provide an informal drop-in to offer one-to-one support & advice on a range of topics such as:

**Parenting - Mental Health - School or College - Finances
Parental Conflict - Friendships - Sexual Health
Domestic Abuse - Family - Substance Misuse - Housing
any worries**

When and where to find us

Drop-ins will be open between **10am - 12pm** then **1pm - 3pm**

Monday 23rd December Bury Early Centre & Radcliffe Children's Centre Hub	Tuesday 24th December Bury East and Whitefield Children's Centre Hub
Friday 27th December Radcliffe Children's Centre Hub	Monday 30th December Radcliffe and Whitefield Children's Centre Hub
Tuesday 31st December Bury East	Thursday 2nd January Radcliffe Children's Centre Hub



Tommy Guest, Year 7 - Martial Arts World Championships

Tommy Guest, Year 7, recently competed at the WKKC World Championships in Albufeira (Mixed Martial Arts). He was entered into 4 competitions; Points, Continuous, Open weight, Tag Team. He was up against fighters from different parts of the world. He came away with a bronze medal and this was in his 'Continuous' section. This was his first ever World Championships and he can be proud of this fantastic achievement!







School Travel Strategy Consultation

TfGM currently are currently running a consultation around the School Strategy and would be keen to hear people's views.

[School Travel Strategy Consultation - Greater Manchester Combined Authority - Citizen Space](#)

The consultation is open until 26.1.25.

Caroline Hoath, Partnerships and Engagement Officer (People and Place), Transport for Greater Manchester

Contact Us

The Elton High School

Walshaw Road

Bury, BL8 1RN

0161 763 1434

email: eltonhigh@bury.gov.uk

Visit us on the web at www.eltonhigh.bury.sch.uk

INSTAGRAM: the_elton_high_school is our new Instagram account, allowing parents to keep up-to-date with goings-on during and beyond the school day. Please follow!

***The next edition of the Elton Times will be sent on Friday 17th
January 2025***